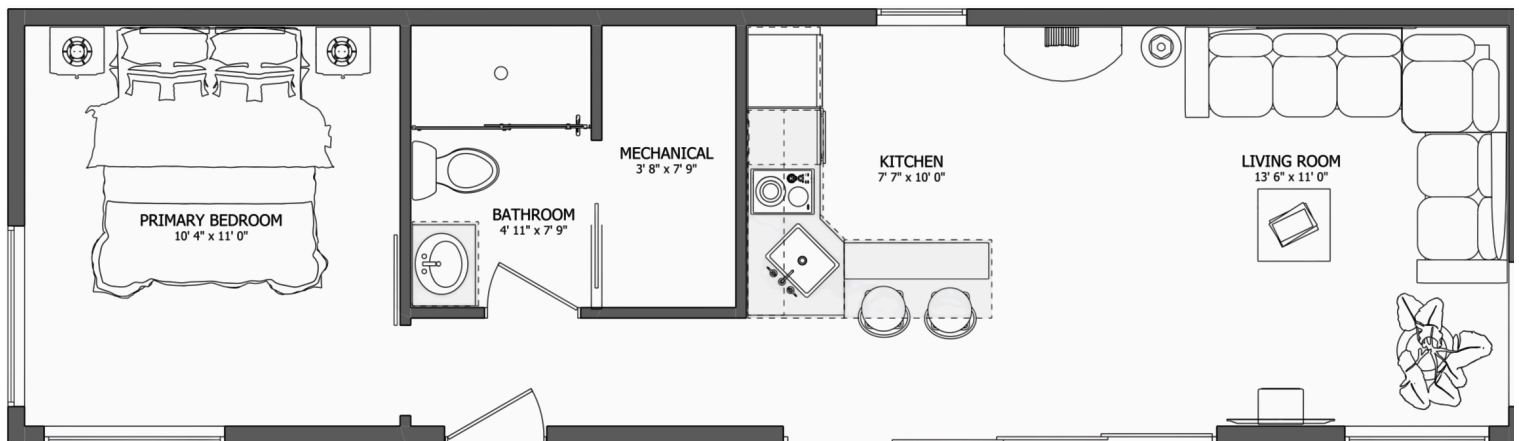


DISCOVERY THE PINE

A 1-bedroom 1-bathroom modular home
starting at \$174,000 CAD

1-780-870-0524 | info@discoveryhomes.ca





PINE SPECIFICATIONS & KEY FEATURES

Total Area: 504 ft ²	Modern Kitchen Design
Bedrooms: 1	Open Concept Living
Bathrooms: 1	High Quality Finishes
Delivery Time: 6-8 Weeks	Large Windows for Natural Light
Ideal for Single Occupants, Small Families	Deliverable Anywhere in Alberta or Saskatchewan
Ideal for Bulk Purchase as Resort Units	Compatible With Energy-Efficient Systems

WHY THIS 1-BED 1-BATH MODULAR HOME?

KITCHEN

Practical storage solutions and ample counter space define this modern, compact layout.

BATHROOM

This eco-friendly bathroom was designed with low water impact in mind.

LIVING AREA

Spacious and light-filled, this open concept living area is ideal for relaxing or entertaining guests.

BEDROOM

A private retreat optimized for comfort and tranquility.

SUGGESTED UPGRADES

- Solar Package (\$18,500 CAD) - reduces typical energy costs upwards of 70%.
- Premium Kitchen (\$9,800 CAD) - Chef-grade appliances and finishes.

WANT TO LEARN MORE?